

SPS 150mm Square Vari-Level Floor Drain With Side-Outlet Lower Body

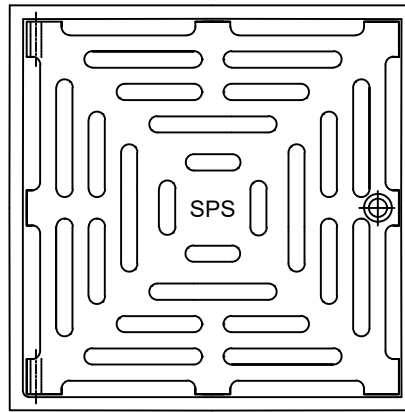
Specification codes:

Q150G/C109 (bronze grate, CI lower body) *special order*
 Q150N/C109 (nickel bronze grate, CI lower body) *special order*
 Q150S4/C109 (polished 304SS, CI lower body)
 Q150S/C109 (satin 316SS grate, CI lower body)
 Side outlet - "C109" = 100mm; "C89" = 80mm

100mm outlet
 80mm outlet

High-heel friendly pattern (6mm gaps)

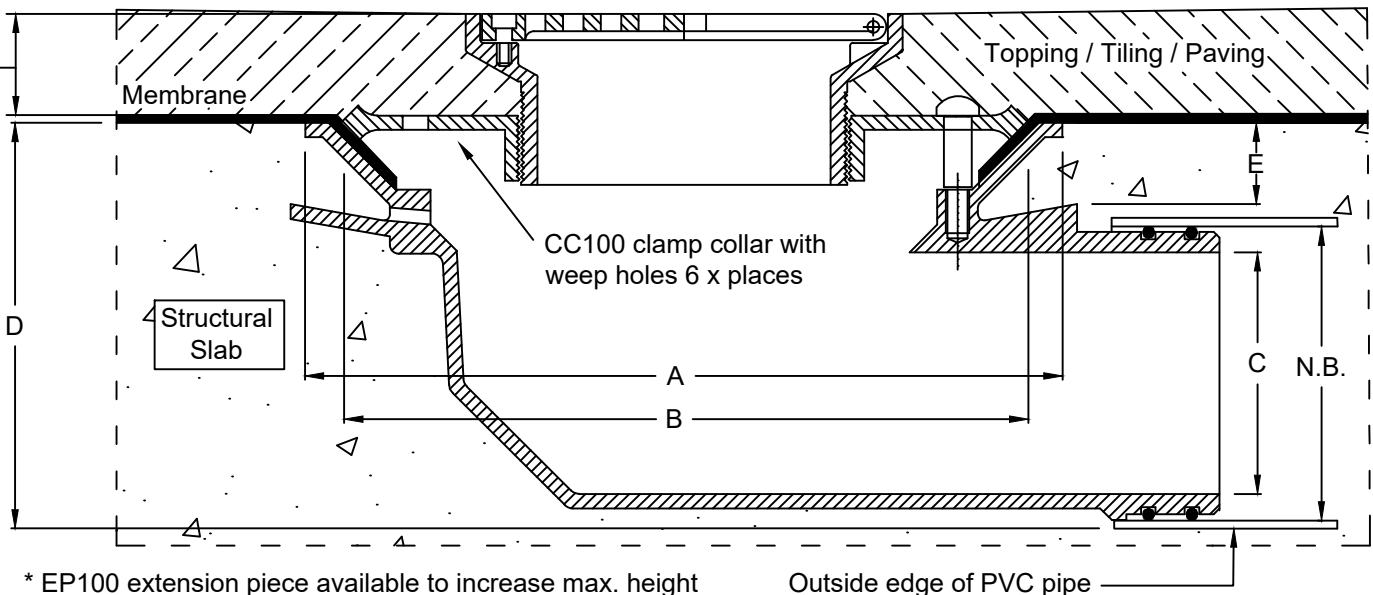
150mm
 Square



- Height-adjustable hinged grate assembly.
- Available in polished 304 and satin 316 stainless steel. Bronze and nickel-bronze available by special order only.
- CI "Truflo" side-outlet lower body with 100mm BSP reversible clamp collar.

Height adjustment:
 Min. 25mm
 Max. 60mm*

Typical Application



N.B.	A	B	C	D	E
80	260	240	62	115	28
100	260	240	83	140	28

Speciality Plumbing Supplies Pty Ltd

Tel: (02) 9417 1900 Fax: (02) 9417 0108 E-mail: info@spsdrains.com.au