

SPS 150mm Round Prison / Safe Cell Drain (Vari-Level) 100mm outlet

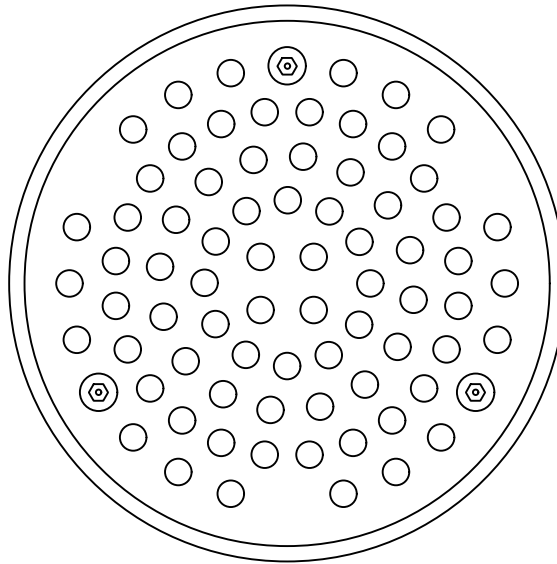
Specification codes:

- R150SH/E (304 SS grate with PVC adapter *Not shown*)
- R150SH/Q (304 SS grate, CI retro-fit lower body)
- R150SH/SQ (304 SS grate, SS retro-fit lower body)
- R150SH/C (304 SS grate, C100A CI "deluxe" lower body)

* SPECIAL ORDER PRODUCT *

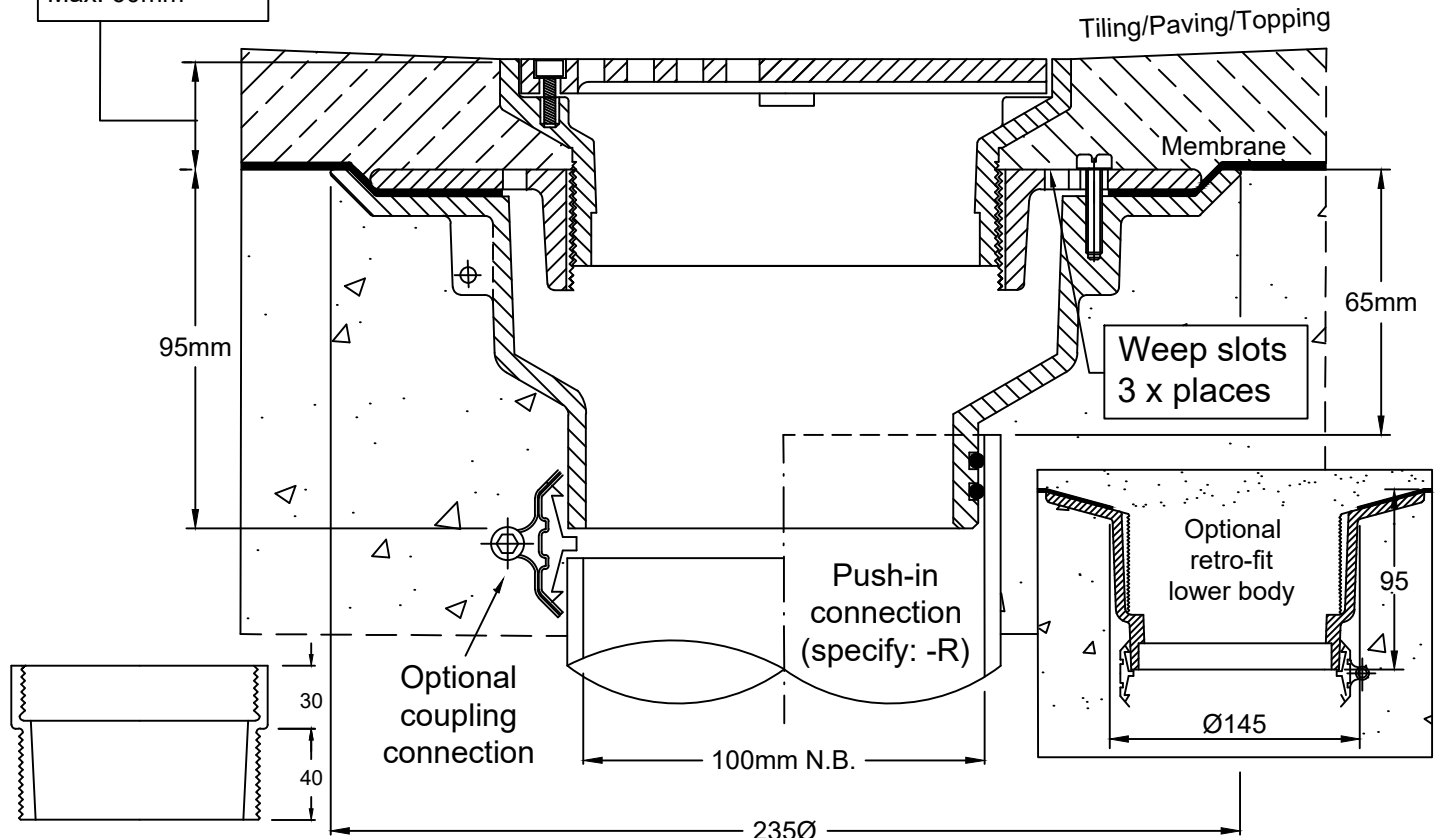
- Floor waste includes special tamper-resistant features for prisons and safe cells.
- Grate assembly available in 304 stainless steel.
- C100A CI "deluxe" lower body with reversible clamp collar (pictured).
- Optional CI or SS retro-fit lower body fits inside 150mmØ core hole.

150mm round grate with 7mm holes and temper-resistant screws



Height adjustment:
Min. 25mm
Max. 60mm**

Typical Application



**Optional Extension Piece

Speciality Plumbing Supplies Pty Ltd

Tel: (02) 9417 1900 Fax: (02) 9417 0108 E-mail: info@spsdrains.com.au