

SPS 150mm Round Vari-Level Vertical Drain

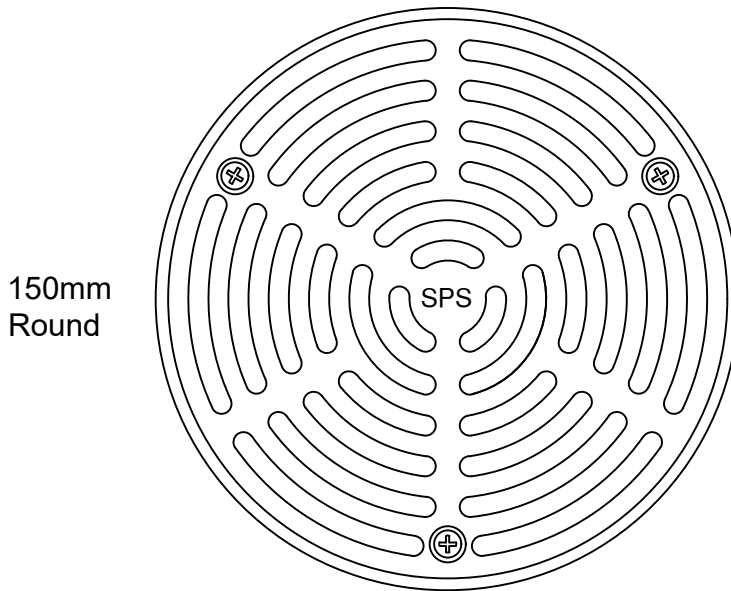
100mm Outlet

Specification codes:

- R150G/C (bronze grate, CI lower body) *special order*
- R150N/C (nickel bronze grate, CI lower body) *special order*
- R150S4/C (polished 304 stainless steel, CI lower body)
- R150S/C (satin 316 stainless steel grate, CI lower body)

- Heigh-adjustable high-heel friendly grate assembly.
- Available in polished 304 & satin 316 stainless steel. Bronze and nickel-bronze available by special order only.
- C100A "deluxe" CI lower body with reversible clamp collar.

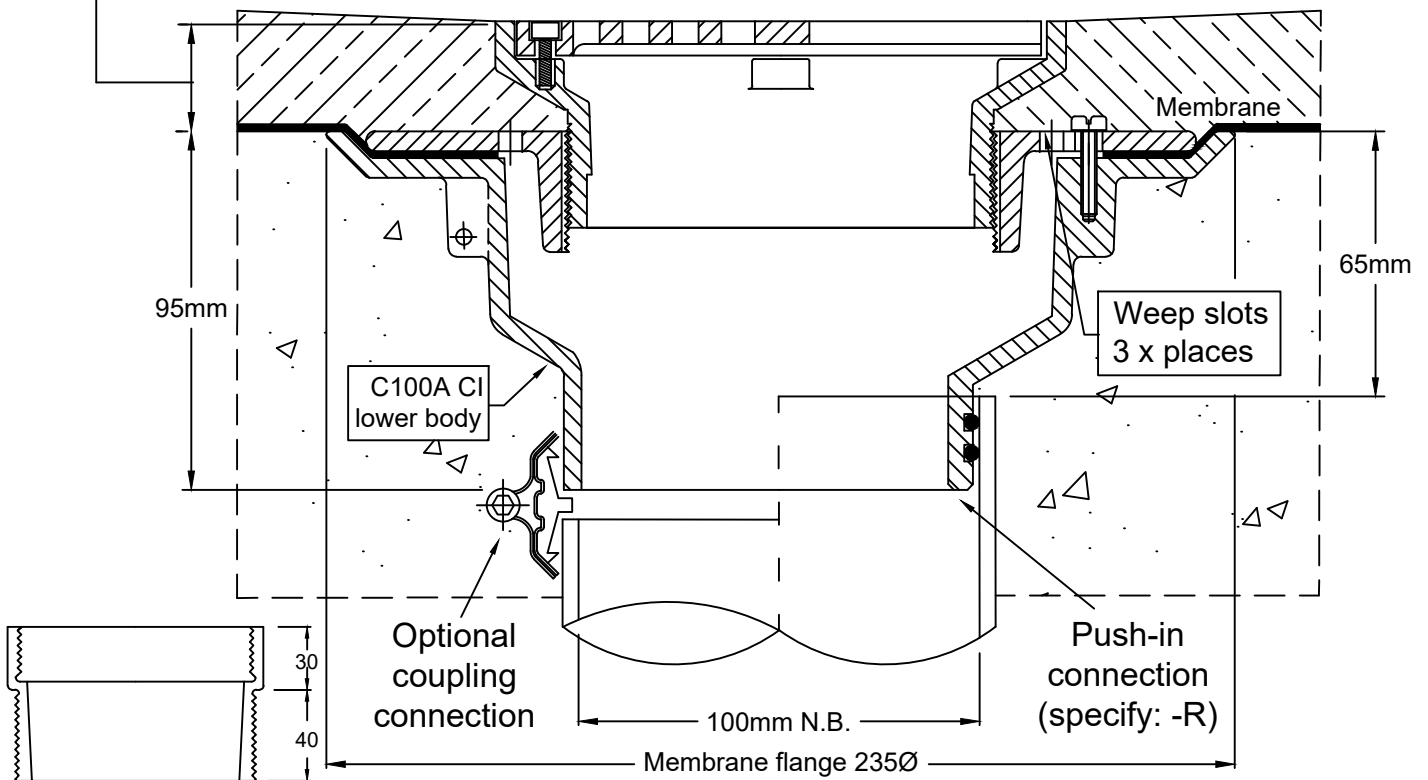
High-heel friendly pattern (5mm gaps)



Height adjustment:
Min. 25mm
Max. 60mm**

Typical Application

Tiling/Paving/Topping



**Optional Extension Piece

*For flow rate data please refer to appendix.

Speciality Plumbing Supplies Pty Ltd

Tel: (02) 9417 1900 Fax: (02) 9417 0108 E-mail: info@spsdrains.com.au