

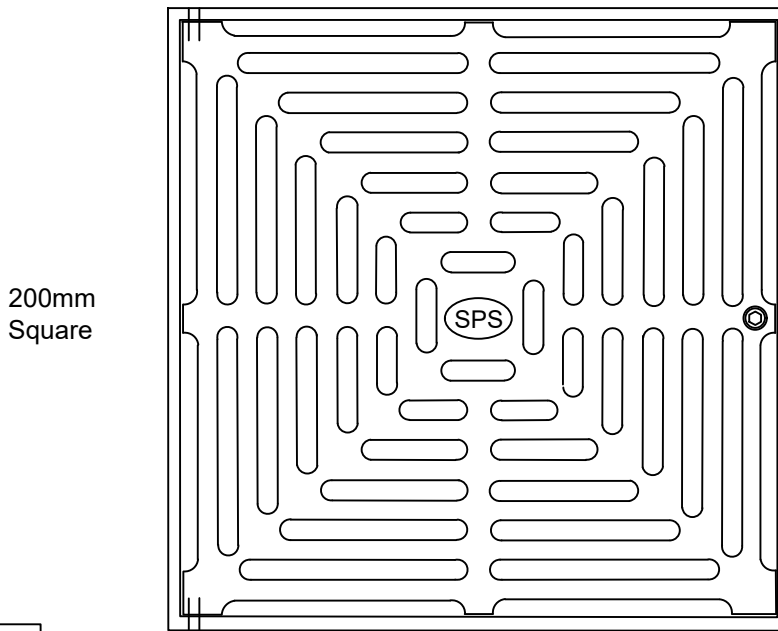
# SPS 200mm Square Vari-Level Vertical Drain

## 100mm Outlet

**Specification codes:**

- Q200G/C (bronze grate, CI lower body) \*special order\*
- Q200N/C (nickel-bronze grate, CI lower body) \*special order\*
- Q200S4/C (polished 304 stainless steel, CI lower body)
- Q200S/C (satin 316 stainless steel grate, CI lower body)

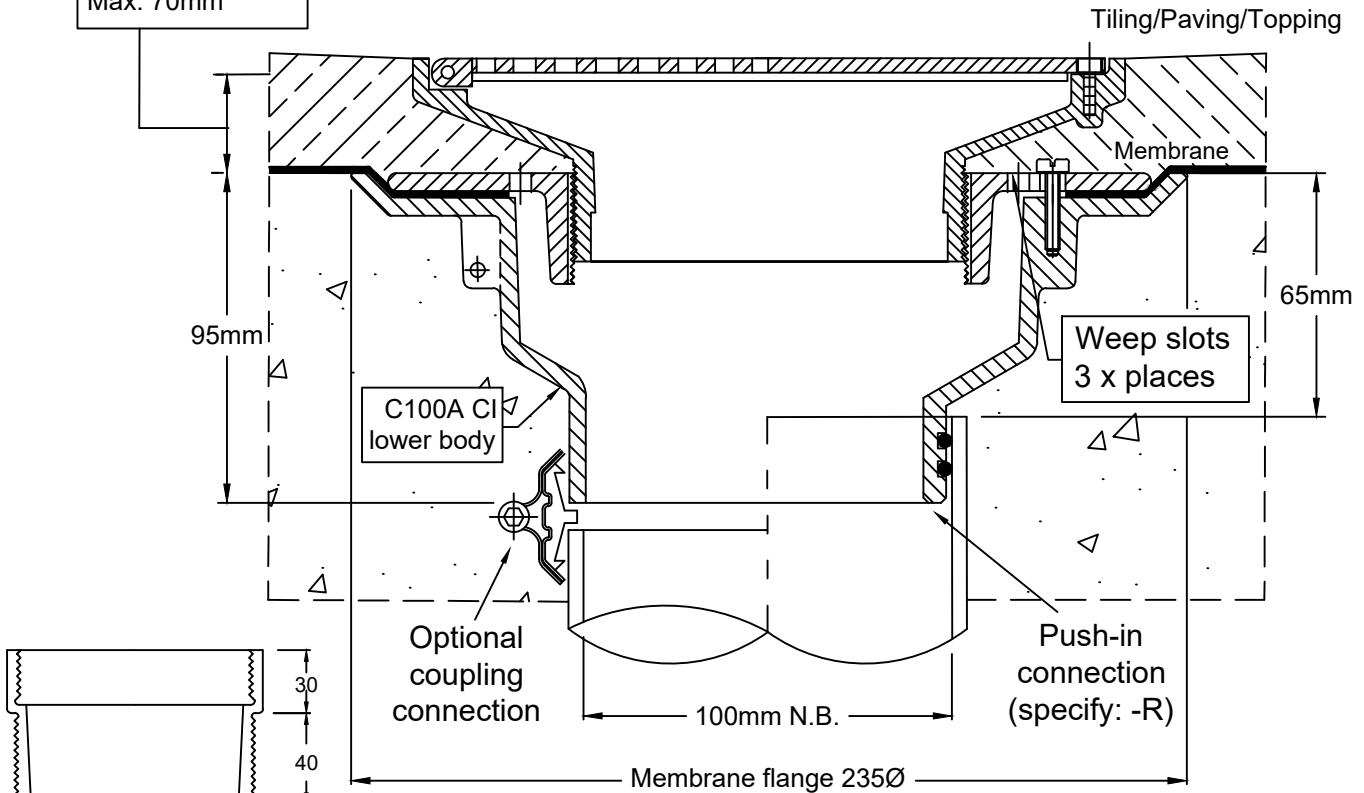
High-heel friendly pattern (6mm gaps)



- Height-adjustable hinged grate assembly.
- Available in polished 304 & satin 316 stainless steel. Bronze and nickel -bronze available by special order only.
- C100A CI "deluxe" lower body with reversible clamp collar.
- Load Class C per AS3996-2006

Height adjustment:  
Min. 30mm  
Max. 70mm\*\*

Typical Application



\*For flow rate data please refer to appendix.

\*\*Optional Extension Piece

## Speciality Plumbing Supplies Pty Ltd

Tel: (02) 9417 1900 Fax: (02) 9417 0108 E-mail: info@spsdrains.com.au